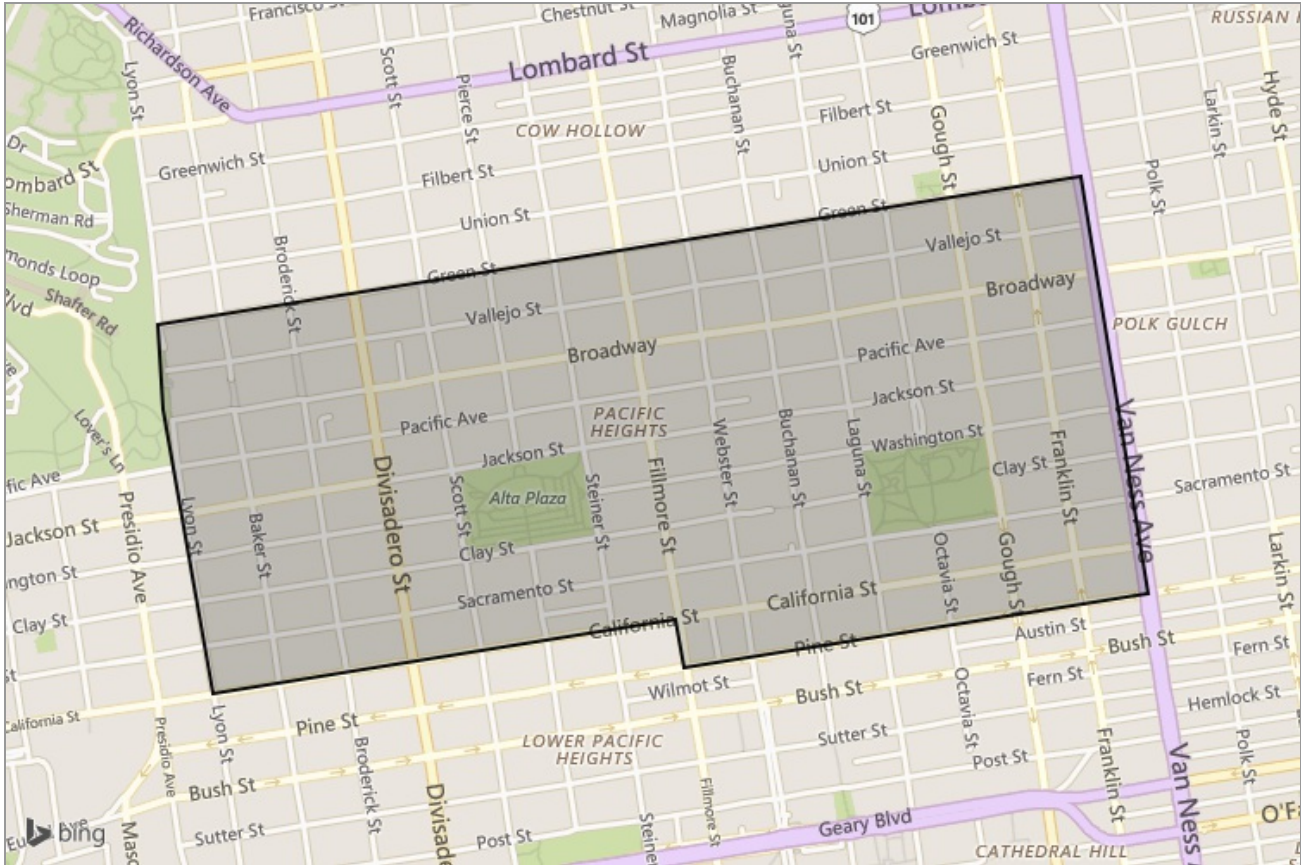


NEIGHBORHOOD REPORT

Pacific Heights in San Francisco, CA



Presented by

Val Krysov

California Real Estate License: 01847176



Work: (415) 385-8949

valkrysov@sfcityrealtor.com

<http://sfcityrealtor.com>

Realty Financial
California

Neighborhood: Housing Stats and Charts

	Pacific Heights	San Francisco	San Francisco County	California	United States
Median Estimated Home Value	\$1.56M	\$1.11M	\$1.11M	\$441K	\$319K
Estimated Home Value 12-Month Change	12%	12.2%	12.2%	6.9%	–
Median List Price	\$1.35M	\$998K	\$998K	\$409K	\$81.8K
List Price 1-Month Change	–6.8%	–1.7%	–1.9%	1%	–1.7%
List Price 12-Month Change	–18.2%	3.1%	3%	7.9%	–0.8%
Median Home Age	76	67	67	44	–
Own	27%	37%	37%	56%	66%
Rent	73%	63%	63%	44%	34%
\$ Value of All Buildings for which Permits Were Issued	–	–	\$194M	\$9.12B	\$102B
% Change in Permits for All Buildings	–	–	–8%	2%	2%
% Change in \$ Value for All Buildings	–	–	172%	18%	7%

Median Sales Price vs. Sales Volume

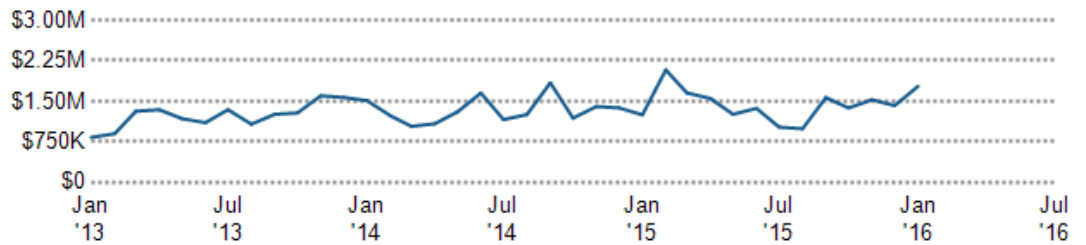
This chart compares the price trend and sales volume for homes in an area. Home prices typically follow sales volume, with a time lag, since sales activity is the driver behind price movements.

Data Source: Public records data

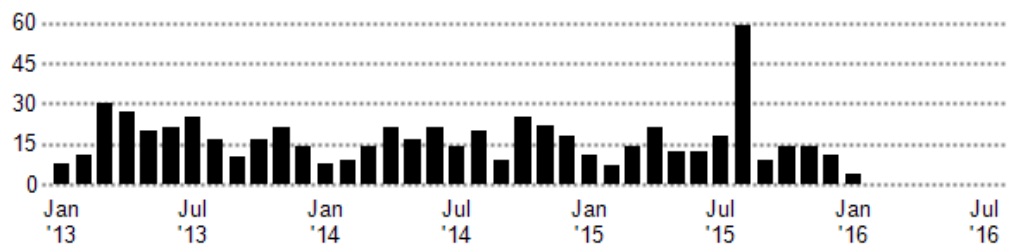
Update Frequency: Monthly

- Median Sales Price
- Sales Volume

Median Sales Price



Sales Volume



Median Listing Price vs. Listing Volume

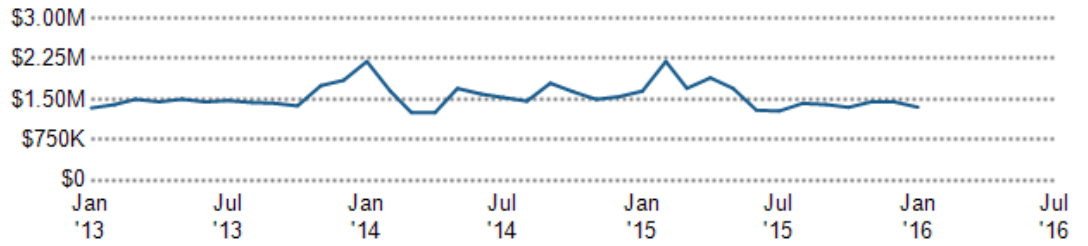
This chart compares the listing price and listing volume for homes in an area. Listing prices often follow listing volume, with a time lag, because supply can drive price movements.

Data Source: On- and off-market listings sources

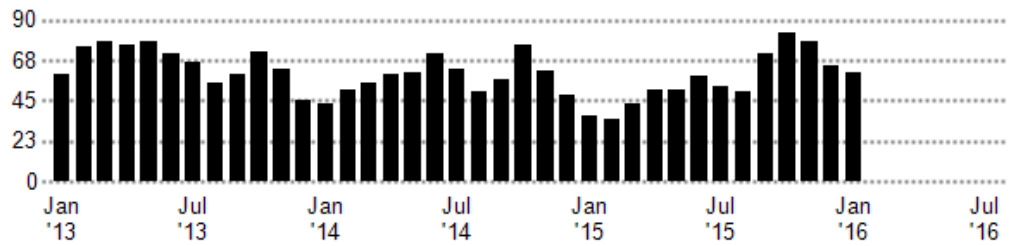
Update Frequency: Monthly

- Median List Price
- Listing Volume

Median List Price



Listing Volume



Neighborhood: People Stats and Charts

	Pacific Heights	San Francisco	San Francisco County	California	United States
Population	17.6K	808K	808K	37.3M	309M
Population Density per Sq Mi	29.4K	17.2K	17.2K	240	—
Population Change since 2000	1.7%	4%	4%	10.2%	9.8%
Median Age	36	39	39	35	37
Male / Female Ratio	49%	51%	51%	50%	49%
High School Graduate	5%	14%	14%	21%	28%
2-Year Degree	11%	20%	20%	30%	29%
Bachelor Degree	46%	32%	32%	19%	18%
Post-graduate Degree	37%	20%	20%	11%	11%

Population of Children by Age Group

This chart shows the distribution of the population of children by age range — from birth to 17 — in the area of your search.

Data Source: U.S. Census

Update Frequency: Annually

■ Pacific Heights



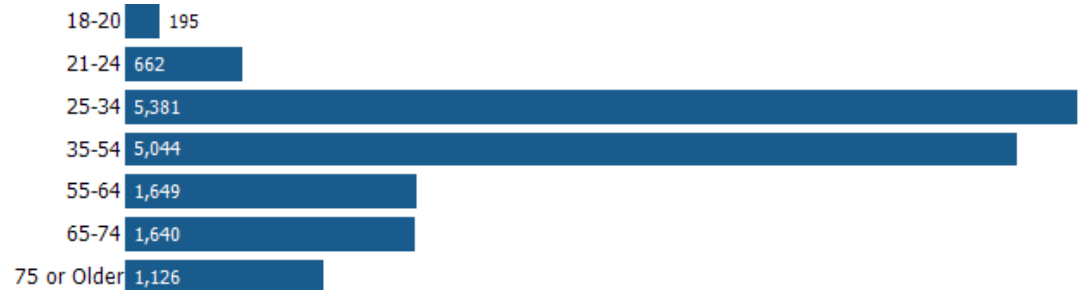
Population of Adults by Age Group

This chart shows the distribution of the population of adults by age range — from 18 to 75-plus — in the area of your search.

Data Source: U.S. Census

Update Frequency: Annually

■ Pacific Heights



Households With Children

This chart shows the distribution of households with children, categorized by marital status, in the area of your search.

Data Source: U.S. Census

Update Frequency: Annually

■ Pacific Heights



Household Income Brackets

This chart shows annual household income levels within an area.

Data Source: U.S. Census

Update Frequency: Annually

■ Pacific Heights



Presidential Voting Pattern

This chart shows how residents of a county voted in the 2014 presidential election.

Data Source: USElectionAtlas.org

Update Frequency: Annually



Neighborhood: Economic Stats and Charts

	Pacific Heights	San Francisco	San Francisco County	California	United States
Income Per Capita	\$108,047	\$47,278	\$47,278	\$29,551	\$28,051
Median Household Income	\$118,430	\$73,802	\$73,802	\$61,400	\$53,046
Unemployment Rate	–	3.3%	3.3%	5.8%	5%
Unemployment Number	–	18.3K	18.3K	1.09M	7.9M
Employment Number	–	535K	535K	17.8M	150M
Labor Force Number	–	553K	553K	18.9M	158M

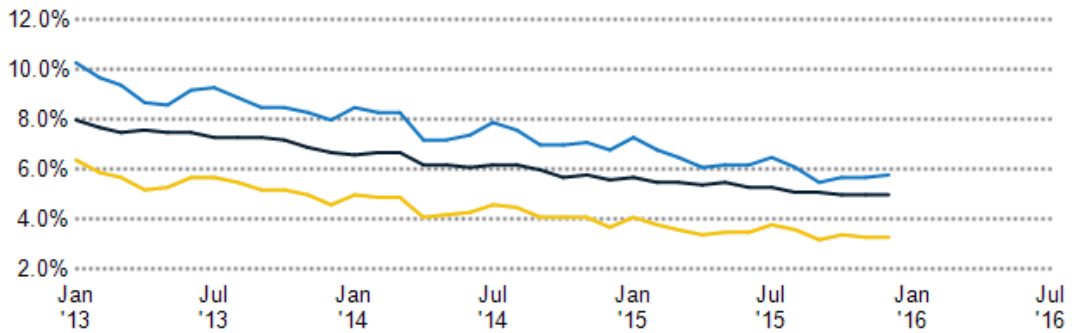
Unemployment Rate

This chart shows the unemployment trend in the area of your search. The unemployment rate is an important driver behind the housing market.

Data Source: Bureau of Labor Statistics

Update Frequency: Monthly

- San Francisco
- San Francisco County
- California
- United States



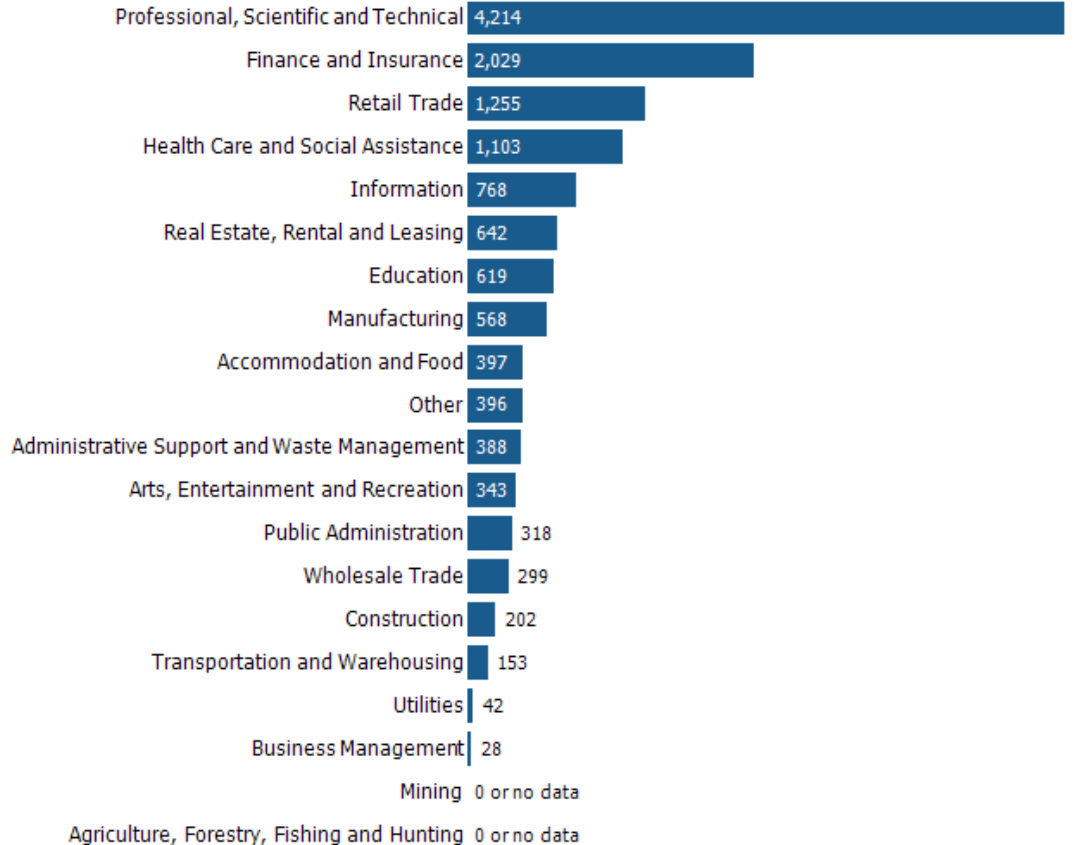
Occupational Categories

This chart shows categories of employment within an area.

Data Source: U.S. Census

Update Frequency: Annually

- Pacific Heights



Neighborhood: Quality of Life Stats and Charts

Quality of Life in –

	Pacific Heights	San Francisco	San Francisco County	California	United States
Elevation (in feet)	443	130	436	–	–
Annual Rainfall (in inches)	–	25.02	25	23.4	–
Annual Snowfall (in inches)	–	0.05	0.09	19.18	–
Days of Full Sun (per year)	–	165	165	159	–
Travel Time to Work (in minutes)	30	30	30	27	25
Water Quality - Health Violations	–	–	–	–	–
Water Quality - Monitoring and Report Violations	–	–	–	–	–
Superfund Sites	0	1	1	125	2,302
Brownfield Sites	No	Yes	Yes	Yes	Yes

Average Commute Time

This chart shows average commute times to work, in minutes, by percentage of an area's population.

Data Source: U.S. Census

Update Frequency: Annually

Pacific Heights

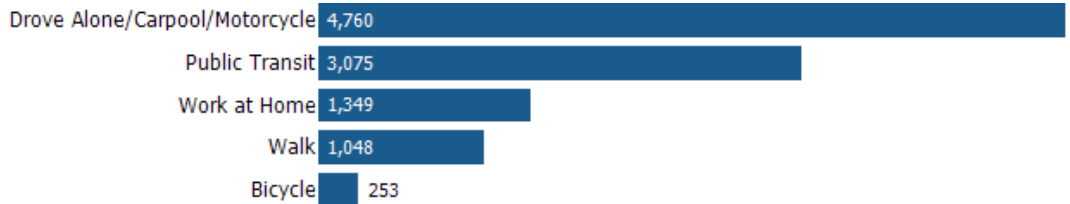


How People Get to Work

This chart shows the types of transportation that residents of the area you searched use for their commute.

Data Source: U.S. Census

Update Frequency: Annually



Walkability Scores (out of 5)

This neighborhood or ZIP code is rated for walking access to general points of interest, reflected in the overall score, plus amenities (such as retail stores) and leisure (such as restaurants and parks). Other factors considered in the scores are street types, weather, public transportation and population density.

Data Source: Maponics

Update Frequency: Quarterly

