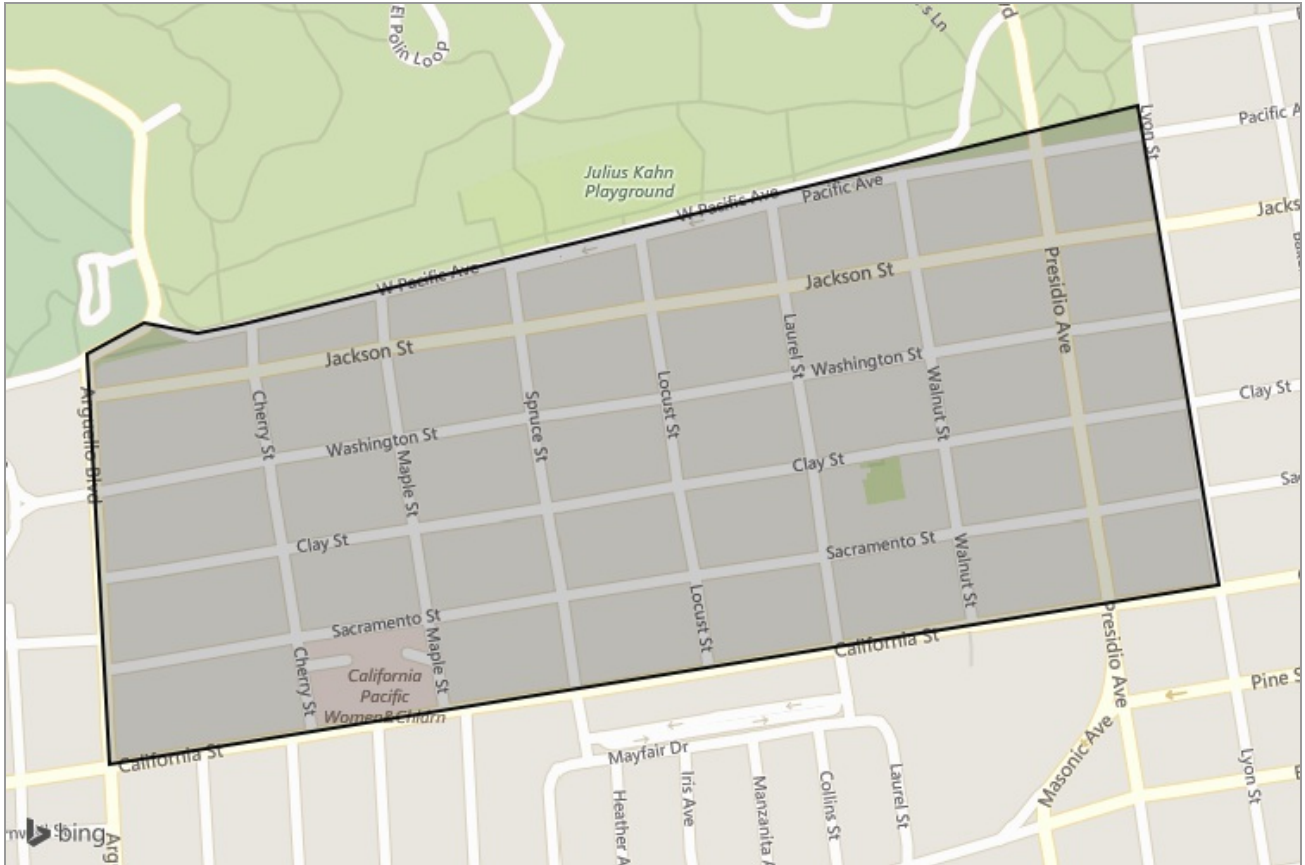


# Presidio Heights in San Francisco, CA



Presented by

**Val Krysov**

California Real Estate License: 01847176



Work: (415) 385-8949

[valkrysov@sfcityrealtor.com](mailto:valkrysov@sfcityrealtor.com)  
<http://sfcityrealtor.com>

Realty Financial  
California

## Neighborhood: Housing Stats and Charts

	Presidio Heights	San Francisco	San Francisco County	California	United States
Median Estimated Home Value	\$2.74M	\$1.11M	\$1.11M	\$441K	\$319K
Estimated Home Value 12-Month Change	3%	12.2%	12.2%	6.9%	–
Median List Price	\$3.44M	\$998K	\$998K	\$409K	\$81.8K
List Price 1-Month Change	78.7%	–1.7%	–1.9%	1%	–1.7%
List Price 12-Month Change	–50.9%	3.1%	3%	7.9%	–0.8%
Median Home Age	89	67	67	44	–
Own	50%	37%	37%	56%	66%
Rent	50%	63%	63%	44%	34%
\$ Value of All Buildings for which Permits Were Issued	–	–	\$194M	\$9.12B	\$102B
% Change in Permits for All Buildings	–	–	–8%	2%	2%
% Change in \$ Value for All Buildings	–	–	172%	18%	7%

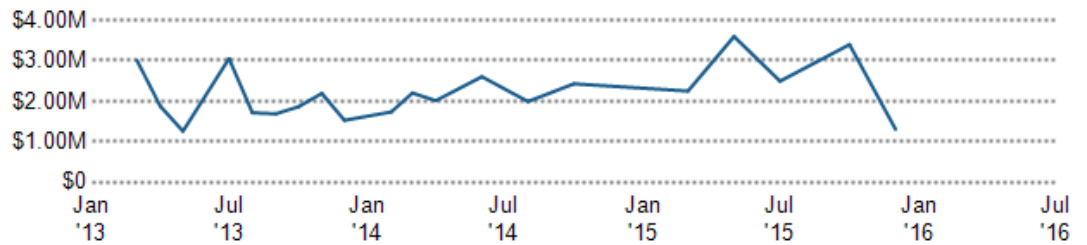
### Median Sales Price vs. Sales Volume

This chart compares the price trend and sales volume for homes in an area. Home prices typically follow sales volume, with a time lag, since sales activity is the driver behind price movements.

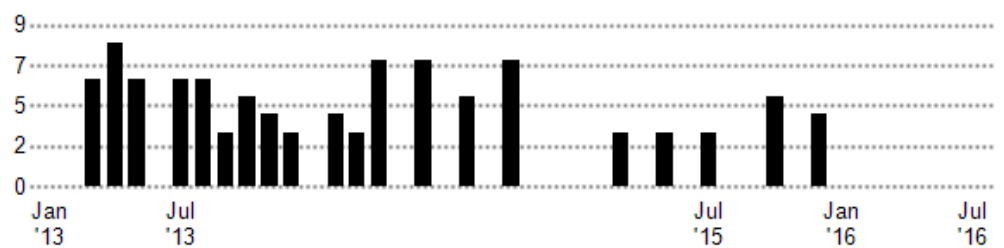
Data Source: Public records data

Update Frequency: Monthly

Median Sales Price



Sales Volume



■ Median Sales Price  
■ Sales Volume

## Median Listing Price vs. Listing Volume

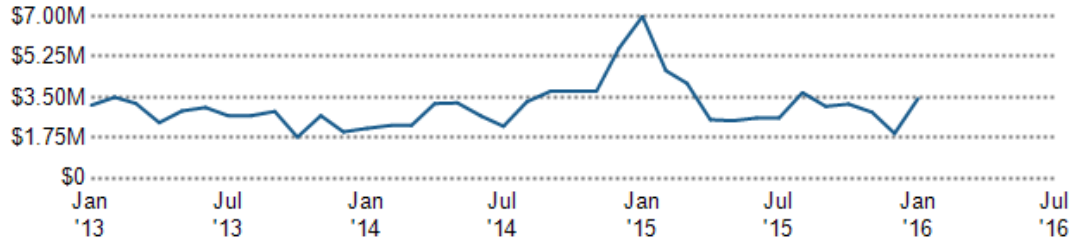
This chart compares the listing price and listing volume for homes in an area. Listing prices often follow listing volume, with a time lag, because supply can drive price movements.

Data Source: On- and off-market listings sources

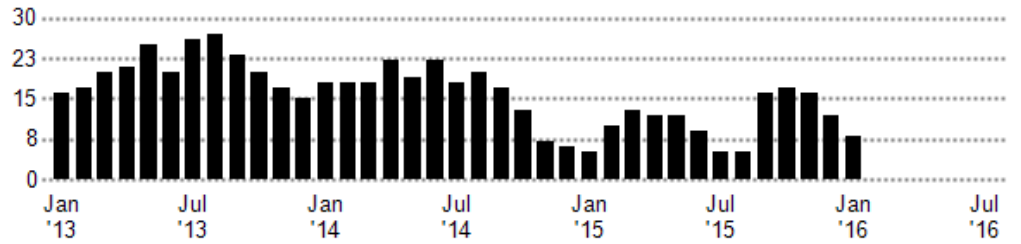
Update Frequency: Monthly

- Median List Price
- Listing Volume

Median List Price



Listing Volume



## Neighborhood: People Stats and Charts

	Presidio Heights	San Francisco	San Francisco County	California	United States
Population	4.15K	808K	808K	37.3M	309M
Population Density per Sq Mi	18.5K	17.2K	17.2K	240	—
Population Change since 2000	0%	4%	4%	10.2%	9.8%
Median Age	42	39	39	35	37
Male / Female Ratio	52%	51%	51%	50%	49%
High School Graduate	6%	14%	14%	21%	28%
2-Year Degree	13%	20%	20%	30%	29%
Bachelor Degree	41%	32%	32%	19%	18%
Post-graduate Degree	35%	20%	20%	11%	11%

### Population of Children by Age Group

This chart shows the distribution of the population of children by age range — from birth to 17 — in the area of your search.

Data Source: U.S. Census

Update Frequency: Annually

■ Presidio Heights



### Population of Adults by Age Group

This chart shows the distribution of the population of adults by age range — from 18 to 75-plus — in the area of your search.

Data Source: U.S. Census

Update Frequency: Annually

■ Presidio Heights



### Households With Children

This chart shows the distribution of households with children, categorized by marital status, in the area of your search.

Data Source: U.S. Census

Update Frequency: Annually

■ Presidio Heights



## Household Income Brackets

This chart shows annual household income levels within an area.

Data Source: U.S. Census

Update Frequency: Annually

■ Presidio Heights



## Presidential Voting Pattern

This chart shows how residents of a county voted in the 2014 presidential election.

Data Source: USElectionAtlas.org

Update Frequency: Annually



## Neighborhood: Economic Stats and Charts

	Presidio Heights	San Francisco	San Francisco County	California	United States
Income Per Capita	\$111,765	\$47,278	\$47,278	\$29,551	\$28,051
Median Household Income	\$121,439	\$73,802	\$73,802	\$61,400	\$53,046
Unemployment Rate	–	3.3%	3.3%	5.8%	5%
Unemployment Number	–	18.3K	18.3K	1.09M	7.9M
Employment Number	–	535K	535K	17.8M	150M
Labor Force Number	–	553K	553K	18.9M	158M

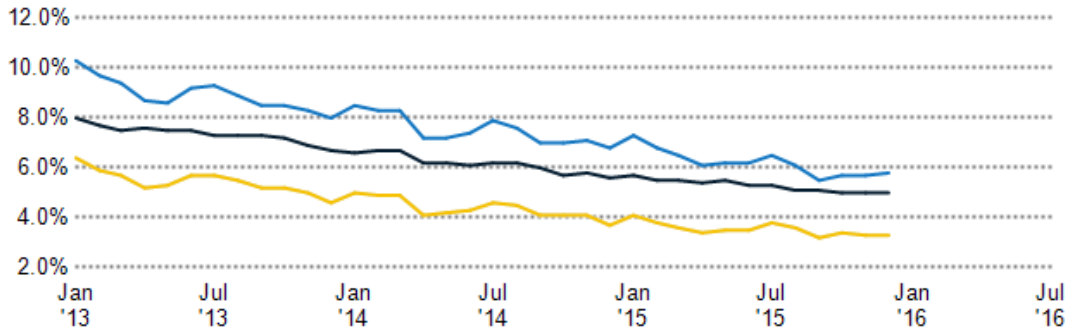
### Unemployment Rate

This chart shows the unemployment trend in the area of your search. The unemployment rate is an important driver behind the housing market.

Data Source: Bureau of Labor Statistics

Update Frequency: Monthly

- San Francisco
- San Francisco County
- California
- United States



### Occupational Categories

This chart shows categories of employment within an area.

Data Source: U.S. Census

Update Frequency: Annually

- Presidio Heights



## Neighborhood: Quality of Life Stats and Charts

Quality of Life in –

	Presidio Heights	San Francisco	San Francisco County	California	United States
Elevation (in feet)	443	130	436	–	–
Annual Rainfall (in inches)	–	25.02	25	23.4	–
Annual Snowfall (in inches)	–	0.05	0.09	19.18	–
Days of Full Sun (per year)	–	165	165	159	–
Travel Time to Work (in minutes)	25	30	30	27	25
Water Quality - Health Violations	–	–	–	–	–
Water Quality - Monitoring and Report Violations	–	–	–	–	–
Superfund Sites	0	1	1	125	2,302
Brownfield Sites	No	Yes	Yes	Yes	Yes

### Average Commute Time

This chart shows average commute times to work, in minutes, by percentage of an area's population.

Data Source: U.S. Census

Update Frequency: Annually



■ Presidio Heights

### How People Get to Work

This chart shows the types of transportation that residents of the area you searched use for their commute.

Data Source: U.S. Census

Update Frequency: Annually



### Walkability Scores (out of 5)

This neighborhood or ZIP code is rated for walking access to general points of interest, reflected in the overall score, plus amenities (such as retail stores) and leisure (such as restaurants and parks). Other factors considered in the scores are street types, weather, public transportation and population density.

Data Source: Maponics

Update Frequency: Quarterly

